

No boundaries, more freedom

Exquisite Appearance
Multi-screen Interaction

Intelligent Writing
Extraordinary Performance

Enterprise Service
Remote Collaboration

MAXHUB X3 conference flat panel is an innovative efficient office equipment, with writing, presentation, and collaboration functions. Through breaking the barriers of conventional meetings and cooperation, MAXHUB X3 makes your work efficient and collaborative by wirelessly connecting multi-terminals and multi-person.

Ultra-large, ultra-thin
and ultra-HD
create extraordinary vision

88.9% Screen Percentage* 4K Ultra-HD Display
19mm Ultra-thin Appearance*

Thin and extraordinary appearance

Highly integrated triple cameras design, six array microphones, and three sets of speakers, with a 19mm thin and flat appearance, making your work space neat and superior.

88.9% screen percentage provides you broader horizon

4K Ultra-large interactive screen, 88.9% screen-to-body ratio, direct bonding technology, and anti-glare technology present you clear image and broad horizon.



*19mm thickness: it is only available for MAXHUB X3 Ultimate.
*88.9% screen-to-body ratio: it is measured with 65" MAXHUB X3 Ultimate series.



Intelligent writing frees your imagination

0.04s rapid response time* **± 0.5mm** touch accuracy
1024 levels pressure sensitivity **smart graphics assistant**

Screen writing is superior to paper writing

Projected capacitive and EMR combined touch technology creates 0.04s response time and brings you fluent and instantaneous writing experience. 1024 levels pressure sensitivity offers pixel-perfect precision and unmatched versatility.

Free annotation records your inspiration

Annotation is available at any interface to record your inspiration. When playing PPT, your annotation can be individually created in every page and easily saved.

Smart assistant writing makes your work easier

Dual-pen and Dual-color writing*, matched with innovative graphic intelligent recognition technology*, table insertion*, and smart gesture control, simplifies your work.

Convenient saving and sharing the meeting records

Conference documents and records can be easily stored and shared by email, and reedited next time as well. *

*0.04s response time: Data are collected based on the MAXHUB Lab environment without other interference and tested with SP08 EMR pen and whiteboard application of MAXHUB conference flat panel, in Android/PC Channel and with 3840*2160 screen resolution machine.
 *Dual-pen and Dual-color writing: MAXHUB X3 Ultimate Series and Premium have the function of delicate writing and dual-pen writing.
 *Graphic intelligent recognition: It works with Windows system (PC module), and only supports rectangle, diamond, pointed line, triangle, polygon, and circle.
 *Table insertion: It works with Windows system (PC module). You can freely add and reduce row and column if it is needed.
 *Reedited next time: It is available for reediting in the whiteboard of MAXHUB Conference Tablet.

Multi-screen interaction eliminates the cable limitation

0.09s wireless share response time* Control back devices through MAXHUB
Synchronous sharing with mobile device **4-split screen mirroring**

Touch and share*, Synchronous Mirroring can be done through Mobile Devices

Free multi-terminals connection* can be achieved on PC or mobile device with wireless mirroring and related software, supporting up to 4 devices mirroring simultaneously and providing you clear comparison of presentation.

Real time mirroring presents fluently and stably

0.09s transmission time* is unlikely to be noticed by the naked eye. The presentation of HD pictures and videos can still be clear and fluent.

Double-directional operation creates flexible and efficient interaction

With MAXHUB wireless sharing, you can operate PC reversely with MAXHUB Conference Flat Panel, or use mobile devices* directly operate MAXHUB to write, annotate, present etc.

*0.09s mirroring time: Data are collected based on the MAXHUB Lab without other interference and tested with a 11" 1366*768 screen resolution MacBook Air 10.11 system connected with MAXHUB standard series.
 *Touch and share: MAXHUB wireless dongle needs to be connected with PC. For the first use, please pair the wireless dongle with the conference flat panel.
 *Free multi-terminals connection: PC terminal only support windows 7, macOS 10.10 or other updated versions, Mobile devices need to have Android 5.0, iOS 9.0 or updated versions operating system.
 *Mirroring with mobile device: only support devices with Android 5.0 and other updated versions operating system.



From left to right: MAXHUB X3 Standard, MAXHUB X3 Premium, MAXHUB X3 Ultimate



Intelligent EMR pen



Touch Pen



Wireless Screen Sharing Dongle



Electrical Trolley

Mobile Stand



Camera Mount



Container for Touch Pen and dongle

X3 Conference Flat Panel

Specification	X3 Standard (S Series)	X3 Premium (P Series)	X3 Ultimate (U Series)
Display			
Size	55/65/75/86/98"	65/86"	65/86"
Display Ratio		16:9	
Backlight		DLED	ELED
Resolution		3840(H) × 2160(V)	
Viewing Angle		Horizontal 178° , Vertical 178°	
Touch System			
Glass Material	Anti-glare toughened glass	Smooth anti-glare Tempered glass	
Sensing Type	Infrared	EMR+ Infrared	P-CAP+EMR
Touch Point		20 points	
Touch Mode	Finger+Opaque object(≥2mm)	Finger+Opaque object(≥2mm)+Electromagnetic Pen	Finger+Electromagnetic Pen
Touch Accuracy		± 1mm	
Electromagnetic Pen Accuracy	-	0.5mm	
Camera			
Location	Top × 1	Left × 1 Right × 1 Top × 1	
Pixels		8-megapixels	12-megapixels
Automatic Control		Automatic white balance, adaptive ambient brightness	
Lens Distortion		≤1%	
Smart Switch		Support	
Face Recognition		Support	
Microphone Array			
Directivity		Front	
Pickup Distance		8m	
Quantity		6	
Sampling Frequency		16KHz	
Sampling Rate		16bit	
Automatic Control		Automatic gain, automatic noise reduction	
Echo Cancellation		Support	
Auditory Localization		Support	
Speaker			
Frequency-domain		80Hz-20KHz	
Speaker Quantity		3	
Acoustic Chamber Quantity		3	
Stereo		Support	
Operating System			
CPU		Dual A73	
Dominant Frequency		1.2GHz	
GPU		5 Core Graphic Acceleration Chip	
ROM		2G	
RAM		32G	
Operating System	Android 7.0, optional Windows 10	Android 7.0+Windows 10	
PC Module			
PC Type		Ultra-thin Pluggable Intel® Core	
CPU		Intel® Core i3/i5/i7 (optional)	
ROM		DDR4 8G / 16G (optional)	
RAM		128G / 256G (optional)	
GPU		Intel® HD Graphics	
Environment Requirement			
Power		100-240V~ 50 / 60Hz	
Altitude		Below 5000m	
Standby Power Consumption		≤0.5W	

*All data are from MAXHUB Lab

MAXHUB Efficient Conference Platform

MAXHUB Efficient Conference Platform is designed to offer enterprises comprehensive conference products and services. With Conference Flat Panels, Integrated LED Display Terminals, and Mirroring Boxes etc., MAXHUB provides you integrated experiences in display, interaction, and collaboration, breaking the multi-terminal and multi-person communication barriers and making your work efficient, intelligent, and pleasant.



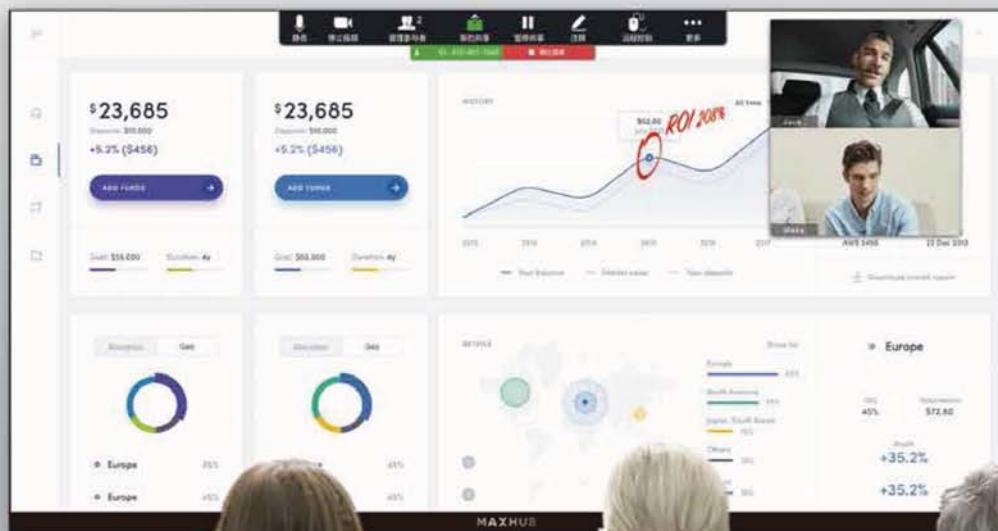
MAXHUB
X3 Conference Flat Panel



MAXHUB
Integrated LED Display Terminal



MAXHUB
Mirroring Box



› MAXHUB Integrated LED Display Terminal

Created for Large Scenes Presentation

MAXHUB Integrated LED Display Terminal is suitable for meeting rooms, showrooms, lecture halls and other large scenes, offering you the visual experience of giant screen cinema. The outstanding interaction design and mirroring technology of MAXHUB make your presentation smarter and superior.

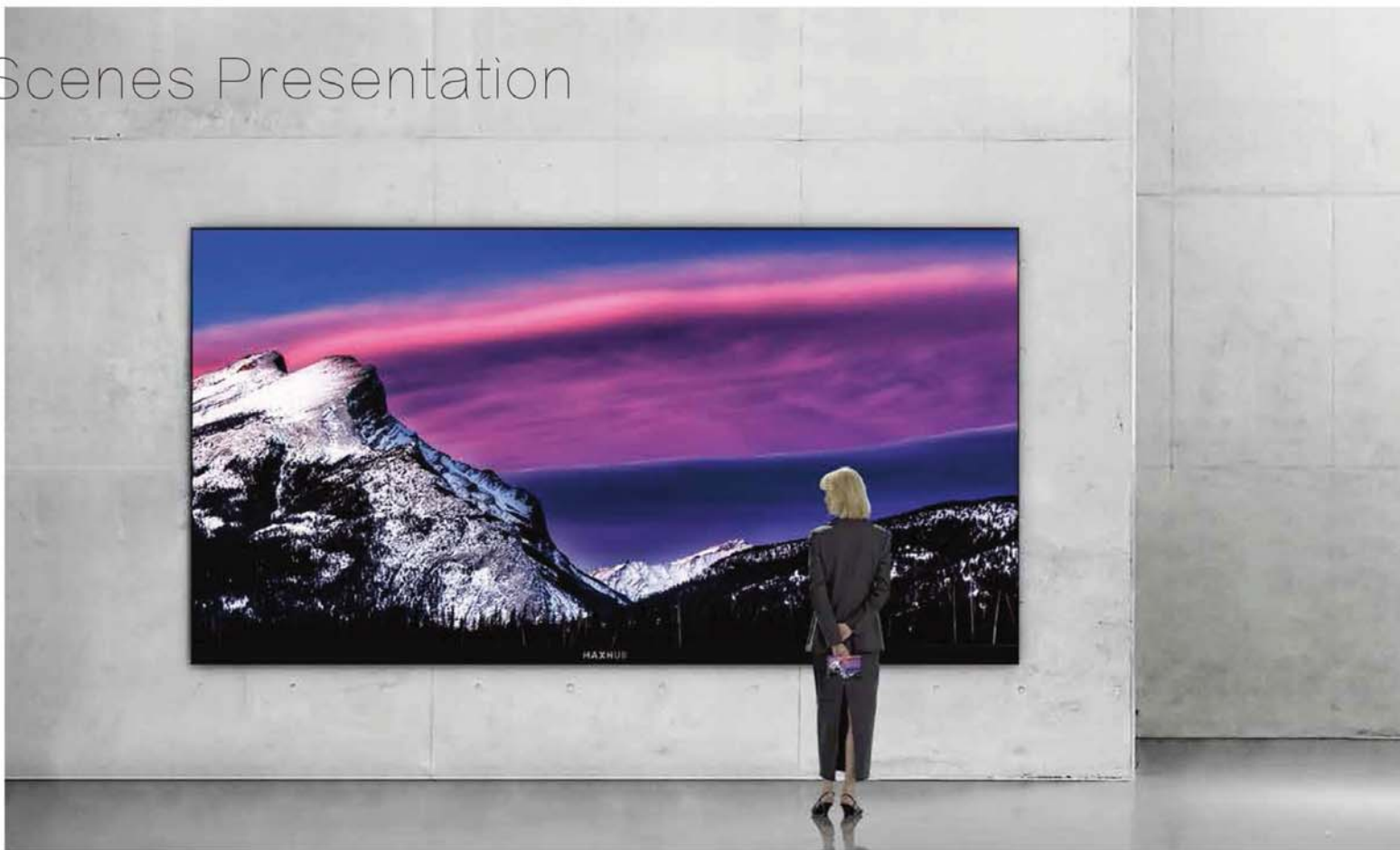
Ultra-light and ultra-thin configuration fits all space layout

38mm thin screen* **8.5kg** ultra-light machine case*

With the "All in One" design concept, modularized machine case, power supplement system, control system, Wi-Fi and Bluetooth* are integrated to save more space, combining with light and thin screen (the smallest thickness is 38mm), super narrow aluminum frame.



*38mm ultra-thin screen: 38mm is the smallest thickness of 176" LED display terminal.
*8.5kg ultra-light machine case: it is designed for 150"/165"/220" LED display terminal machine case.
*Wi-Fi and Bluetooth module: only available for 176" LED display terminal.





Giant screen HD display provides excellent visual experience

2K full HD display presents exquisite and natural image

Full Lamination Technology*, 2K full HD display, 1920Hz/s refreshing frequency, lossless and natural static and motion graphics. Keeping high grayscale in low brightness, and flexible and adjustable brightness and temperature design present clear and sharp images indoors and outdoors.

160-degree visual angel make all position VIP seats

160 degree horizontal and vertical visual angel provides board horizon*, making all position VIP seats.

*Full Lamination Technology: the gap is less than 1mm, unseen for naked eyes.
*Broad horizon: only available for 176" LED display terminal.

Easy installation and maintenance
reduce company costs

Turn on and turn off with one key, simple and easy

Giant screen cinema experience started with one key.

Front screen installation saves your space

Light and thin machine case supports front screen installation. Saving much space since no need to leave maintenance channel.

Convenient and efficient Front disassembly maintenance

Hot swapping supports replacing modules, battery, system card and repairing without stopping or shutting down the machine to reduce difficulties and costs.



Diversified application for more interactive scenes

Wireless connection, easy multi-terminal mirroring

No more complicated operation and tangled cables. Real time Mirroring can be achieved through your smartphone, PC, and tablet. It supports at most 4 devices mirroring simultaneously* and provides you a clear comparison

Matching with MAXHUB conference flat panel and compatible with plenty of applications

Easy operation by matching with MAXHUB conference flat panel. MAXHUB applications and third-party software are supported for information publication, welcome screen, and annotation etc.

*Wireless mirroring and 4-split screen mirroring: it can be achieved with MAXHUB wireless mirroring device and MAXHUB mirroring assistant.
*More applications: it works with MAXHUB conference flat panel, or third-party applications.

› MAXHUB Mirroring Box

Upgrade your old conference room

MAXHUB mirroring box can project PC, smartphone, and tablet to big screen. *

Only with one Mirroring Box*, upgrading can be done.



Real time mirroring
without the limitation of cables

0.09s wireless mirroring* **4-split screen Mirroring**
Synchronous Operating with Mobile Device

Only with one click*, lossless video and image can be present. One image can be displayed simultaneously on two screens. MAXHUB multi-screen interactive technology supports 4-split screen real time mirroring, showing you a clear data comparison. Synchronous Operating with Mobile Device makes presentation and communication experience beyond your imagination.

New HD vision shows
fluency and reality

4K Ultra-HD output **60fps** Display

4K decoder technology offers you extremely bright and real images.

Small Size , but high performance
and exceptional experience

6 Core CPU **4G** RAM **16G** ROM

Android 7.1 system , Ultra-large Storage , Support 2.4GHz/5GHz Dual-frequency Wi-Fi , No stuttering , Smooth HD video playback.

*PC, Smartphone, and tablet; it supports PC terminal with Windows 7, macOS 10.10 or higher versions, and smartphone or tablet with Android 5.0, iOS 9.0 or updated versions.
*Only with one Mirroring Box, one touch mirroring can be achieved with MAXHUB Assistant. Please download the APP or search with MAXHUB wireless mirroring device, hold it before the first use.
*Wireless mirroring, real time mirroring can be done with MAXHUB Wireless Mirroring Box.
*CPU data is for collected based on the MAXHUB Lab environment and tested with a 100% utilization for resolution MacBook Air 10.11 system connected with 55" MAXHUB Standard Screen.



Ultra-big screen with remote collaboration Leads to a boundless office

12-megapixel smart triple camera **8m** voice picking-up*
Screen sharing **Remote mirroring** **Real time writing**

Integrated and light assembly

Built-in camera, voice picking-up, and speaker modules.

Outstanding remote configuration is specialized for multi-parties HD conference

Leading technology, applied for presenting more fluent, clear, and stable audio and video experiences, includes 12-megapixel smart triple cameras, 6 built-in array microphones, 8m voice picking-up, auditory localization system, 2.1 channel stereo, and real human voice restored by intelligent EQ.

Ultra-big screen remote collaboration eliminates the space limitation.

Through remote screen sharing, mirroring, and real time writing, you will have HD video and sharing contents on the screen, just like you are working face to face in the same room with your colleagues, partners, and clients.

Extraordinary performance excellent quality

Core i3/i5/i7 CPU **Android 7.0 / Windows 10** **16GB ROM**

More services, better value

Cloud storage **Conference Management**
Centralized Control **Office Internet of Things**

*8m voice picking-up: Under a normal speaking conditions, the voice of surrounding is 45-50db, according to the experiment data from MAXLAB Lab.

Clients



Tencent



China Southern Airlines



Deloitte



SPD Bank



Distrii



Biostime



Sougou



Evcom

Clients



DEEJ



Country Garden Group



Circle Harmony



Pingan Technology



CGB



Guangzhou Automobile Group



Gemdale